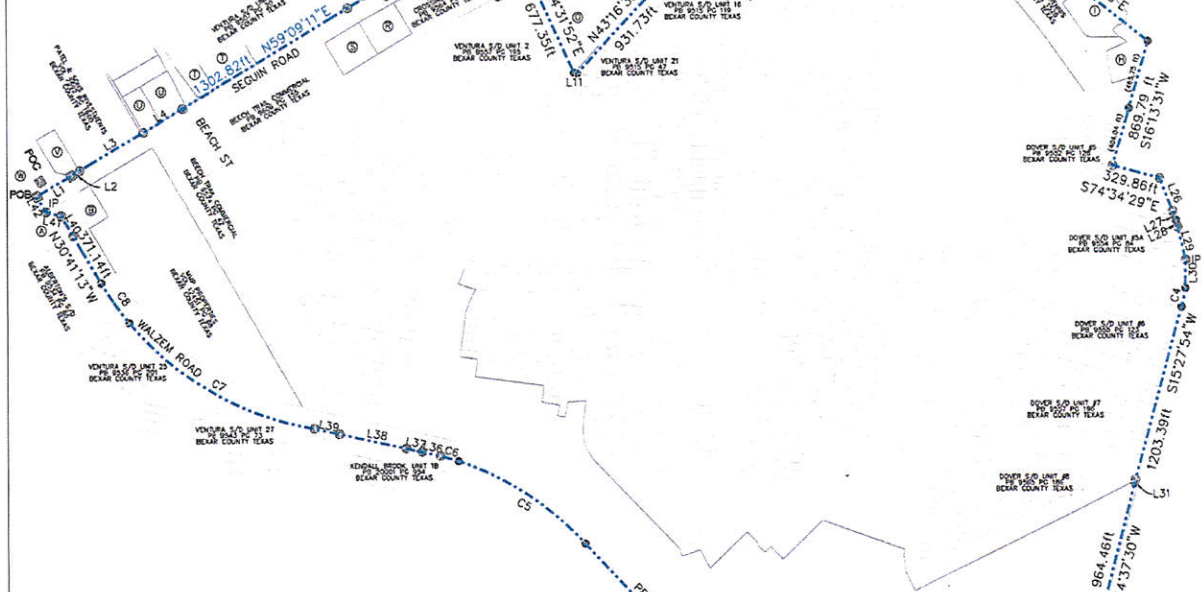
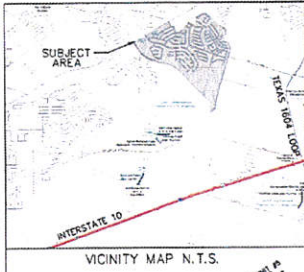


BEING A 686.82 ACRES ± TRACT OF LAND
LOCATED IN BEXAR COUNTY, TEXAS

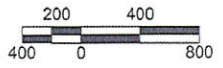


CURVE DATA			
CURVE #	RADIUS	BEARING	DISTANCE
C-1	5769.65	N61°48'13"E	486.20
C-2	800	N38°48'19"E	102.82
C-3	11	N06°01'43"W	19.70
C-4	913.75	S11°53'23"W	128.33
C-5	1940	N56°41'15"W	1019.45
C-6	1940	N73°58'13"W	126.62
C-7	2028	N60°18'26"W	1438.05
C-8	2028	N35°16'50"W	329.90

LINE TABLE					
LINE #	BEARING	DISTANCE	LINE #	BEARING	DISTANCE
L1	N59°19'49"E	269.61	L2	S55°04'03"E	85.72
L2	N59°14'19"E	66.37	L3	N29°26'34"E	50.00
L3	N59°04'35"E	503.71	L4	S60°33'26"E	15.75
L4	N59°06'38"E	310.20	L5	N39°44'18"E	141.04
L5	N64°13'05"E	185.60	L6	S21°50'14"E	236.04
L6	N64°16'16"E	300.12	L7	S21°03'26"E	64.87
L7	S31°23'04"E	120.57	L8	S14°20'25"E	44.72
L8	S19°04'36"W	42.54	L9	S13°30'22"E	226.98
L9	S25°36'42"E	252.12	L10	S00°57'32"W	189.27
L10	N64°07'01"E	251.26	L11	S15°27'54"W	21.40
L11	S70°56'43"E	21.42	L12	S08°46'55"W	115.49
L12	N42°31'11"E	11.69	L13	N55°26'41"W	93.84
L13	N29°49'06"E	81.71	L14	N46°04'04"W	127.45
L14	N43°06'22"E	176.75	L15	N46°23'08"E	83.37
L15	N33°30'17"E	111.38	L16	N77°16'05"W	126.77
L16	N27°39'05"E	40.38	L17	N77°46'03"W	109.96
L17	N28°30'20"E	138.87	L18	N77°41'13"W	464.71
L18	N36°59'01"E	109.30	L19	N77°41'13"W	171.58
L19	N57°25'00"W	126.95	L20	N39°24'20"W	154.81
L20	N31°22'01"E	50.57	L21	N75°35'57"W	106.09
L21	S45°14'05"E	12.86	L22	N30°23'38"W	120.04

PROPERTY OWNERS		
OWNER/SUBDIVISION NAME	PLAT BOOK/VOLUME	PAGE
A LEHIGH GAS WHOLESALE	VOL 19017	PG 674
B FOODMAKER NUMBER 868 S/D	PB 9542	PG 10
C BE CORNER JV	VOL 13512	PG 42
D BE CORNER JV	VOL 12320	PG 2304
E BE CORNER JV	VOL 12320	PG 2304
F LARRY & MELVINA SCHUSTER	VOL 7621	PG 149
G BEATRICE TRIMBLE	VOL 9416	PG 1345
H MELANIE MARIE HENNIS	VOL 17915	PG 797
I MELANIE MARIE HENNIS	VOL 7029	PG 487
J WHOLE LIFE CHRISTIAN CENTER	VOL 11820	PG 1538
K WHOLE LIFE CHRISTIAN CENTER	VOL 11820	PG 1538
L LAUNDROMAT PLACE S/D	PB 9727	PG 213
M TJ ELITE PROPERTIES LLC	VOL 14979	PG 954
N TJ ELITE PROPERTIES LLC	VOL 14979	PG 954
O JOHN TRUE	VOL 18448	PG 987
P FM 78 VENTURA S/D	PB 9560	PG 73
Q ALA S/D	PB 9534	PG 4
R CONVERSE PLAZA S/D	PB 18199	PG 52
S RAMOS 78 S/D	PB 9701	PG 215
T VENTURA PLAZA S/D	PB 9516	PG 119
U IMPRESSA PARK S/D	PB 9540	PG 42
V WHATABURGER	VOL 8161	PG 1346
W RANDOLPH BROOKS CREDIT UNIV	VOL 7280	PG 617

- CONCRETE MONUMENT
- IRON PIN (FOUND)
- POINT



HORIZONTAL AND VERTICAL DATUM

*BEARINGS ARE BASED ON NAD83 (GCRS) TEXAS STATE PLANE COORDINATE SYSTEM, SOUTH CENTRAL ZONE (4204). COORDINATES AND DISTANCES ARE IN U.S. SURVEY FEET. DISPLAYED COORDINATE VALUES ARE SURFACE VALUES DERIVED BY MULTIPLYING GRID COORDINATES BY 1.00017 (GSAF: 1.00017).

*THE HORIZONTAL AND VERTICAL CONTROL COORDINATE VALUES WERE OBTAINED BY GPS OBSERVATIONS BASED ON LICA NETWORK.

GARCIA & WRIGHT
CONSULTING ENGINEERS, INC.
Engineering Firm Reg. No. F-1802

407 West Rhapsody
San Antonio, Texas 78216
Office : (210) 349-5253 Fax: (210) 349-0715
www.GarciaWright.com
Survey Firm Reg. No. 10021400



STATE OF TEXAS
COUNTY OF BEXAR

I HEREBY CERTIFY THAT THE ABOVE PLAT IS TRUE AND CORRECT ACCORDING TO AN ACTUAL SURVEY MADE ON THE GROUND UNDER MY SUPERVISION.

THIS 8th DAY OF January 2020 A.D.

Raul H. Garcia
RAUL H. GARCIA
REGISTERED PROFESSIONAL LAND SURVEYOR No. 3255